

MILANO SLIM CORNER

Aluminium LED cooler lighting fixture



Features

Milano Slim Corner is dedicated to wall type vertical freezers & chillers.

The special lens design creates an even light distribution up to 50cm to one side.

Each freezer requires 2 pcs.

Meat display versions are available.

Different configurations available upon request.

Specifications / data per meter

Electrical

Power	12W
Input voltage	24V DC
Consumption	12W (Max)

LED

Type	3535
QTY	12 pcs
CCT	3000K-6500K
CRI	>80 Ra

Light Output

Beam angle	85°
Efficiency	78 Lm/W
Lumen	936 Lm

Food Display Versions

Meat:	CCT-Pink
Fish:	CCT-10000K
Vegetable & Fruit:	CRI>97 Ra

Working Temperature

-25°C / -35°C ~ +45°C

IP Rating

IP54

Appearance

Material	Anodized aluminium, PMMA
Dimensions	L1002 x W27.8 x H22.8 mm
Max Length	2612 mm
Diffuser	Clear

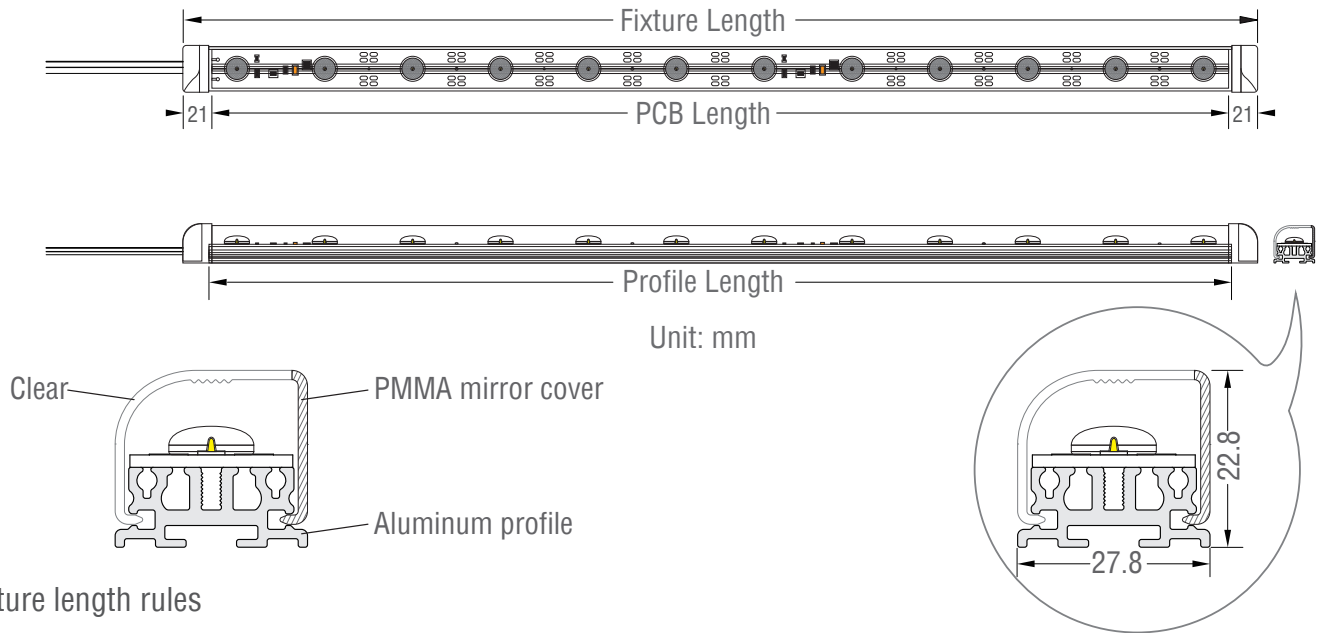
Accessories

Screws / Magnets

Wire Exit

Linear

Mechanical Structure

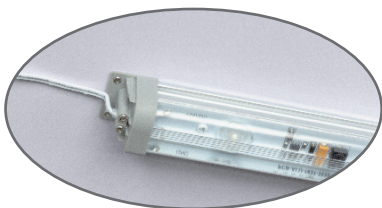


• Light fixture length rules

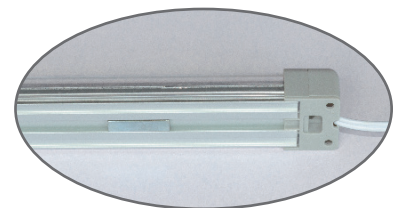
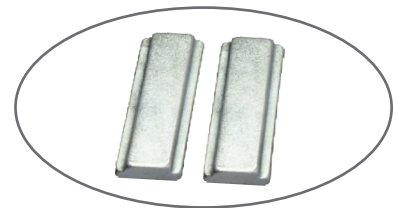
Fixture Length (mm)	Profile Length (mm)	PCB Length (mm)
522	490	480
682	650	640
842	810	800
1002	970	960
1162	1130	1120
1322	1290	1280
1482	1450	1440
1642	1610	1600
1802	1770	1760
1962	1930	1920
2122	2090	2080
2282	2250	2240
2442	2410	2400

Installation

• Mounting

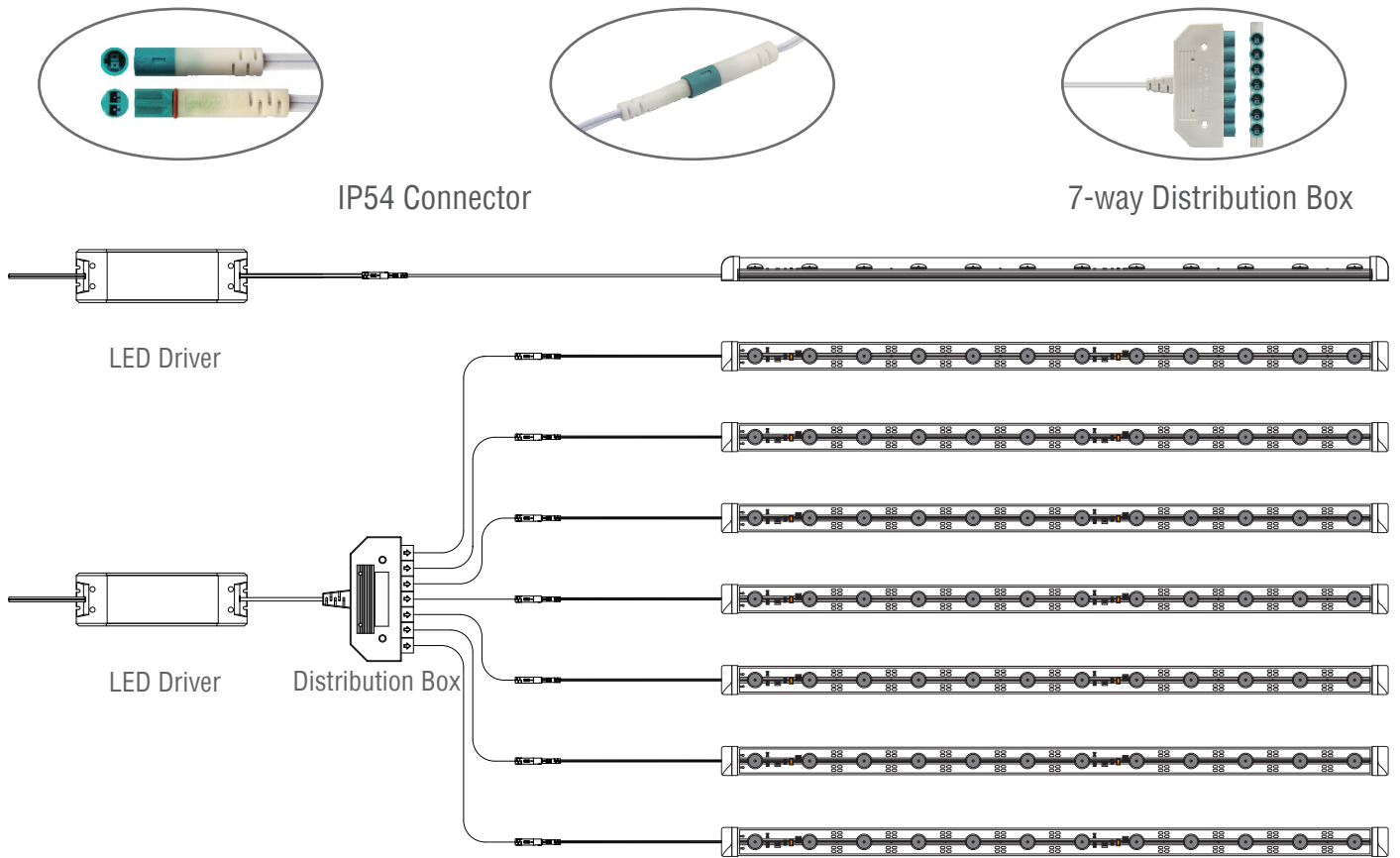


Screws



Magnets

Connection Diagram



Applications

