

NIZZA LINEAR

PMMA LED cooler linear lighting fixture



Features

The co-extruded PMMA lighting fixture is designed for shelf and refrigeration display lighting. Food display versions are available. Different configurations available upon request.

Specifications / data per meter

Electrical

Power	9.6W
Input voltage	12V / 24V DC
Consumption	9.6W (Max)

LED

Type	2835
QTY	140 pcs
CCT	2700K-6500K
CRI	>80 Ra

Light Output

Beam angle	120°
Efficiency	80-90 Lm/W
Lumen	820 Lm

Food Display Versions

Meat:	CCT-Pink
Fish:	CCT-10000K
Vegetable & Fruit:	CRI>97 Ra

Working Temperature

-25°C / -35°C ~ +45°C

IP Rating

IP54

Appearance

Material	PMMA
Dimensions	L1022 x W11 x H12 mm
Max Length	3122 mm
Diffuser	Milky

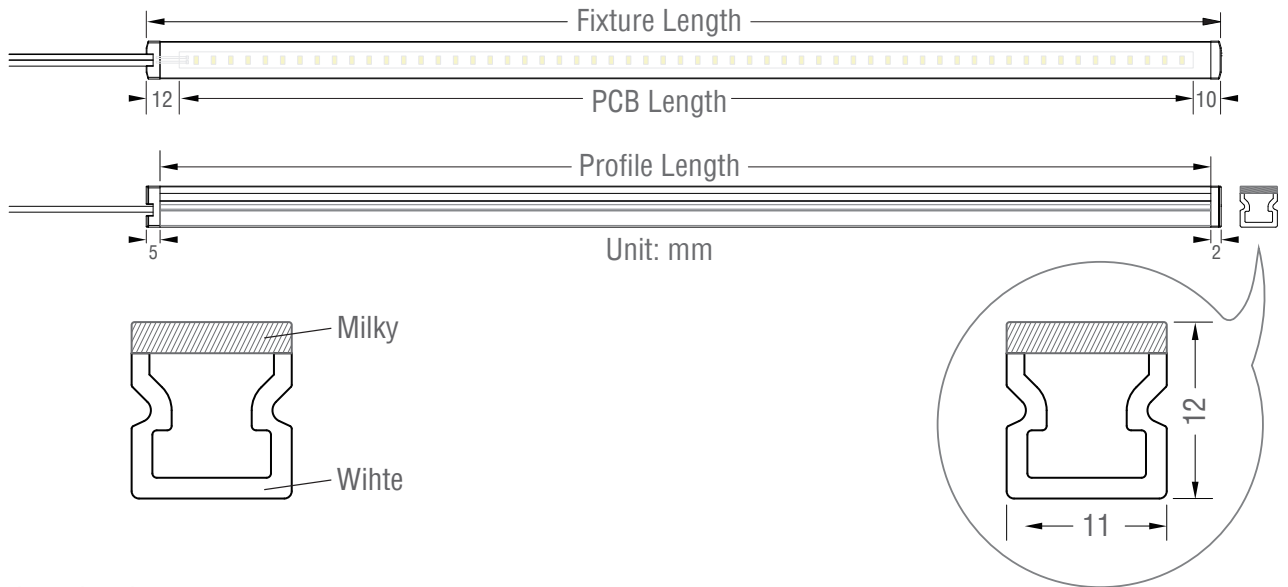
Accessories

Spring steel clips / Magnet clips / Magnetic tape

Wire exit

Linear + 90° x 3 ways out

Mechanical Structure



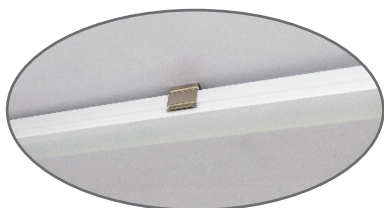
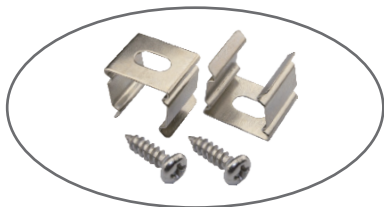
• Light fixture length rules

Fixture Length (mm)	Profile Length (mm)	PCB Length (mm)
122	116	100
172	166	150
222	216	200
272	266	250
322	316	300
372	366	350
422	416	400
472	466	450
522	516	500
572	566	550
622	616	600
672	666	650
722	716	700

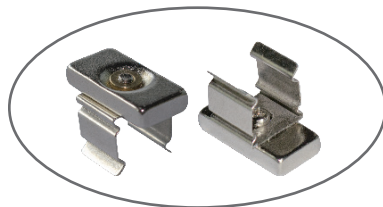
Fixture Length (mm)	Profile Length (mm)	PCB Length (mm)
778	772	750
828	822	800
878	872	850
928	922	900
978	972	950
1022	1016	1000
1522	1516	1500
...		
2022	2016	2000
...		
2522	2516	2500
...		
3122	3116	3100

Installation

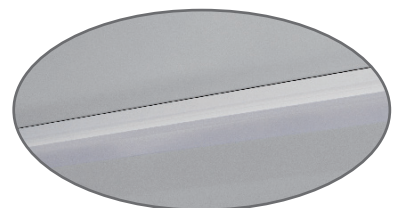
• Mounting



Clip with screws

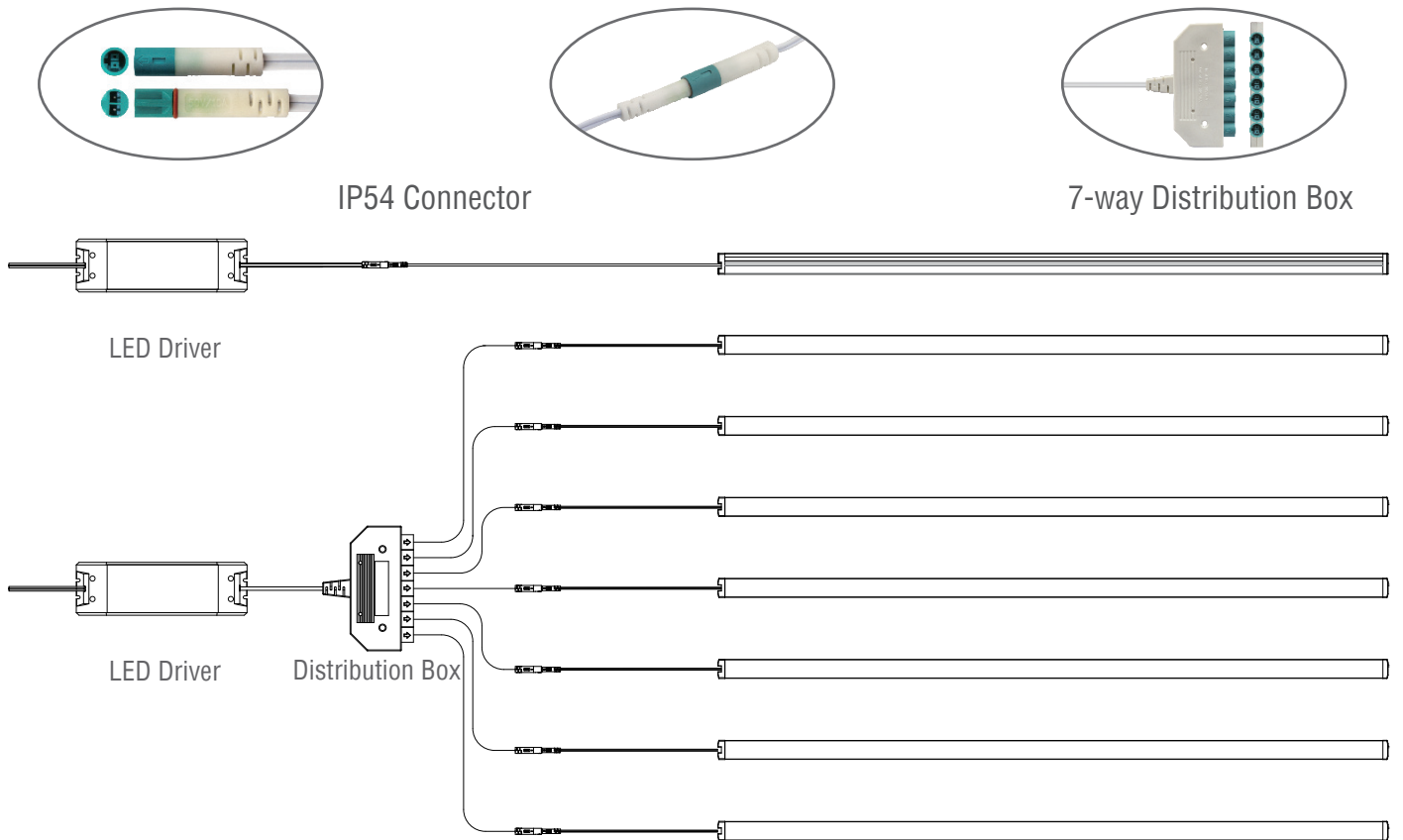


Clip with magnet



Magnetic strip

Connection Diagram



Applications

